

Hi! BEDFORD

BUILD YOUR OWN HIGH STREET

Goldings

Paper Model at 1:76 Scale

(107 High Street, Bedford)

High Street Heritage Action Zone



REVITALISING OUR Hi!STREET

[HistoricEngland.org.uk/HighStreets](https://www.HistoricEngland.org.uk/HighStreets)
[#HistoricHighStreets](https://twitter.com/HistoricHighStreets)

Hi! BEDFORD

BUILD YOUR OWN HIGH STREET

Goldings - Paper Model at 1:76 Scale (107 High Street, Bedford) High Street Heritage Action Zone



*For ages 8+. Adult supervision required when using cutting tools and glue.
Please read these instructions before starting construction.*

For more information on this project, please visit: www.thehigginsbedford.org.uk/Learning

With thanks to: **Garner Associates Accountants, M J Granger Grounds Maintenance and FRR Architects.**

Materials

- Printed model sheets (x5 A4 sheets supplied)
- Scissors / Craft Knife / Scalpel
- Cutting Mat
- Ruler
- Glue (such as UHU)

Step 1 - Scoring & Cutting

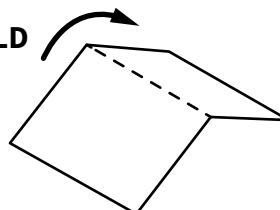
Please prepare the model parts by cutting them out/scoring so they are ready to be assembled.

All parts need cutting around their outer edge. Additional cuts are shown in by a black dotted line on the diagrams (parts 1 and 8 only). Score lines are indicated by small arrows on the diagrams - when scoring the card be careful not to press too hard. The grey areas on the parts show where glue will need to be applied.

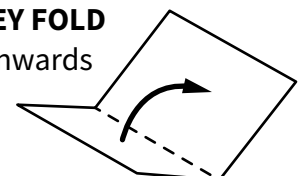
The model uses two types of fold:

- Mountain Fold:
shown by the \wedge symbol
- Valley Fold:
shown by the \vee symbol

MOUNTAIN FOLD
Fold outwards



VALLEY FOLD
Fold inwards



Step 2 - Lower Shop Front Assembly

1. Fold the tabs on part 6 at right angles to the panel.
2. Fold the panel to match the shape of part 7.
3. Apply glue to the tabs on part 6. Join this to part 7, following the line, to form the lower shop front.
4. Parts 6A and 7A allow for an additional lower shop front to be create as an alternative.

Step 3 - Initial Building Assembly

1. Fold the tabs on parts 2, 3 and 5 at right angles to the panel.
There is a choice to use a branded version of the left side panel (part 3A).
2. Apply glue to the vertical tab on part 2. Join this to part 5 to form the side/rear of the building.
3. Repeat the above to join part 3 to the other side of part 5 to form the other side of the building.
4. Apply glue to the horizontal tabs of parts 2, 3 and 5. Join this to part 4.

Step 4 - Upper Shop Front Assembly

1. Fold part 8 to form the upper shop front, follow the shape shown on the diagram as a guide.
2. Apply glue to the tab and join to itself.
3. Insert part 9 into the slots cut on the top of part 8.
4. Part 9A is a blank version to create your own alternative sign/shop name.

Step 5 - Main Shop Front Assembly

1. Fold section A towards the rear of the building (away from you) to form the inner pillar.
Apply glue to the tab and join.
2. Fold section B towards the front of the building (towards you) to form the outer pillar.
Apply glue to the back of tab B1 (apply glue to the non-printed side) and join.
3. Fold B2 to form the curved top of the pillar. Tuck the tapered end into the hollow part of the pillar to form the curve of the decorate pillar.
4. Apply glue to the rear of part 10A and join to the front of the outer pillar.
5. Repeat the above steps for the opposite side of the main shop front.
6. Apply glue to the rear of part 8 (created in Step 4). Join this to the shop front between the outer pillars.

Step 6 - Main Building Assembly

1. Fold the side tabs of part 1 at right angles to the panel ready to be glued.
2. Fold along the horizontal score lines to create the shape of the main roof - follow the shape shown on the diagram as a guide.
3. Apply glue to the tabs and join to main building created in Step 3.
4. Fold the tabs on part 11 at right angles to the panel so they are ready to be glued. Fold along the centre score line - use the shape of rear panel (part 5) as a guide.
5. Apply glue to the upper tabs of rear panel (part 5) and the end tabs of the roof (part 11).
Join to the main construction. The horizontal tabs on part 11 sit to the outside of the main building.
6. Slide the lower shop front created in Step 2 to complete the assembly.

Step 7 - Advertising Sign

Create an advertising board for the side of the model. This could either advertise the shop itself or pick a product that would be sold there. The information below shows the previous occupants and uses of the building.

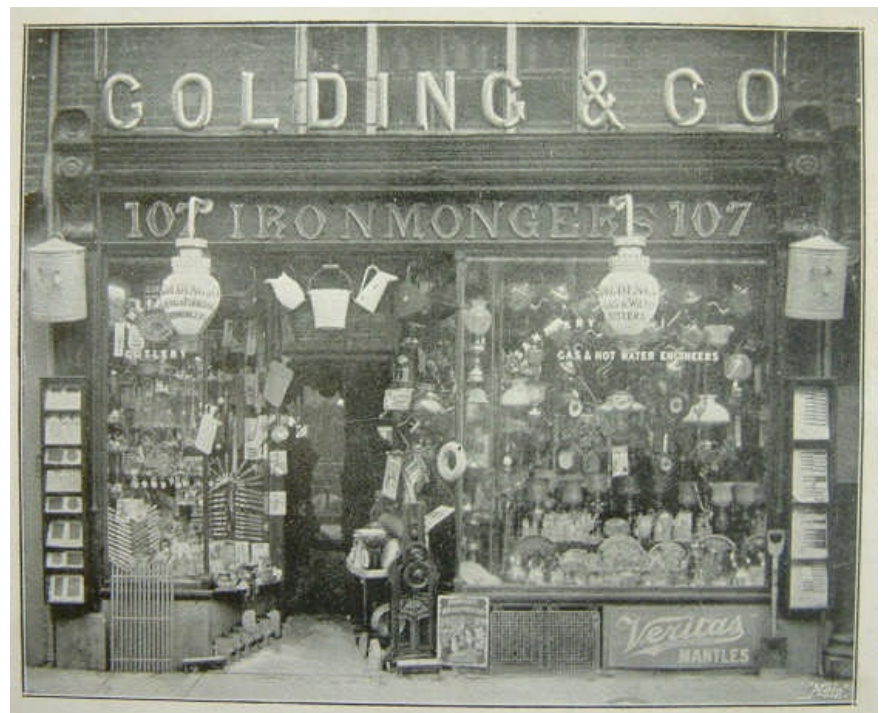
Remember, Ironmongers sold most household products, including tools and items for the kitchen & garden.

- **1889 - Mrs Ellen Sim**
British lace manufacturer to Her Majesty Queen Victoria, baby linen, Berlin Wool repository, ladies underclothing.
- **1894 - Day and Son, Ironmongers**
- **1897 - Golding and Grant**
- **1903 - William Golding and Co, Ironmongers**
Gas and hot water engineers, gas mantles, gas lights, cutlery, mangles, buckets.
- **1938 - Golding and Co (Bedford) Ltd, Ironmongers**
Coal skuttles, plumbing.
- **1974/5 - Goldings Ironmongers**
Garden tools, power tools, key cutting/ locksmith, pest control, model aeroplanes and boats.
- **2021 - To be announced shortly**

The advert can be drawn directly on to the side of the model - it is best to do this before the model is constructed. Alternatively use part 13 - this is a separate board that could be used to create the advert and then glued to the side of the model.



Goldings Ironmongers, 2008
(Source: Bedford High Street Heritage Gazetteer)



Photograph from Mate's Illustrated Guide to Bedford
(Source: BLARS)

Congratulations!

You now have a complete model of 107 High Street, Bedford - formally known as Goldings Ironmongers.

